



BRIDGE INDUSTRY CONSULTING

PUMPEN BERATUNG & VERTRIEB



Your distribution partner for

BRIDGE Industry Consulting GmbH
Luxemburger Str. 124 / AP2515

STROBL
PUMPEN

50939 Köln
Germany

mail@bridge-industry-consulting.de
+49 (0)221 670 250 90



OUR PRODUCTS



**STROBL
PUMPEN**

Strobl Pumpen is Your partner for centrifugal pumps. We offer reliable pumps for all fields of conveying liquids. The best solution of your pumping problem is our aim. Therefore, we supply as well complete installations or packages.

Since our founding in 2006 we developed from a niche vendor to a highly specialised partner for machine and installation construction.

Excellent quality is our aspiration, with our products you decide to head for constantly high quality. This is highlighted by our production in Germany, our makes are truly **„Made in Germany“**.

Our pump series meanwhile cover different industries and applications, from sewage water and drainage pumps in municipal use, over compact pumps for installations and vehicles to highly specialised pumps for the chemical, oil and gas industry. Our main aim is to obtain highest technical demands and customers' requests from beginning of development to creation of final products. This is the major commonality of all our pumps.

Continuous development of our products and expansion with new complementing product series will determine our future actions.



WATER AND WASTEWATER



BUILDING TECHNOLOGY



CLEANING, WASHING & ENVIRONMENT



FOOD & DRUGS



INDUSTRY & PLANT ENGINEERING



CHEMICAL & PETROCHEMICAL INDUSTRY



OFFSHORE



SHIPS & TRUCKS



CUSTOMISED SOLUTIONS



“Together with our innovative employees and our customers we want to grow further and fulfil our core aim conveying of liquids best possible.”

Robert Strobl - Founder and CEO



Strobl Pumpen is an owner-managed family enterprise. Our company is located in Hilpoltstein, close to Nuremberg and therefore in the heart of Bavaria. Since 2010 our headquarters are in the industrial area *Am Kränzleinsberg*. The office building with fabrication hall and big test bed has already been enlarged in 2016 by another hall. 2019 we added a deep bore hole to the test bed, which allows testing of pumps with a length of up to 35 m, and in 2020 we moved into the outbuilding of the yet existing office edifice.



Member of

**German Water
Partnership**



metropolregion nürnberg

KOMMEN. STAUNEN. BLEIBEN.

Environmental protection and lived sustainability are a core importance to us. Therefore, we take responsibility for our future and care to do our bit.

- ⦿ Use of Rainwater
- ⦿ 100% Green Energy
- ⦿ Energy Saving Machines
- ⦿ Electric Vehicle Fleet
- ⦿ New Buildings According To Latest Energetic Standards

To make our initiative visible, we joined the “Umwelt + Klimapakt Bayern” in 2019, where we obligate ourselves to take further ecological steps.



As we not only care for environment but as well for a constantly high quality of our products, we record all development and production steps since the first day in accordance with the common standards. To have this confirmed externally, we are certified to ISO 9001:2015.



WATER AND WASTEWATER

The **Sewage Water Pumps (AWP)** are ideal for conveying solid loaded liquids, crude wastewaters, or liquids with hard particles, due to their big free passages. The pumps can be used in all areas of water and wastewater applications by their multiple set up possibilities (dry, flooded or submerged).

- ⦿ Free passages of 20-150 mm depending on impeller and execution
- ⦿ Multi-blade channel type impellers and free flow impellers
- ⦿ Versatile choice of materials and seals
- ⦿ Non-clog or with cutting plate or cutting device





Our **Drainage Pumps (KEP)** suit for drainage applications with intermittent duty for example sumps or pits. The vertical Drainage Pumps are variable in their length and can be equipped with flanges in 1 ½", 2" and 2 ½".

- ⦿ Insensitivity against sand and small stones
- ⦿ Different mounting lengths (max. 2.65 m)
- ⦿ Dry motor set up



The detailed catalogue can be found directly at www.strobl-pumpen.de in the domain "Downloads".

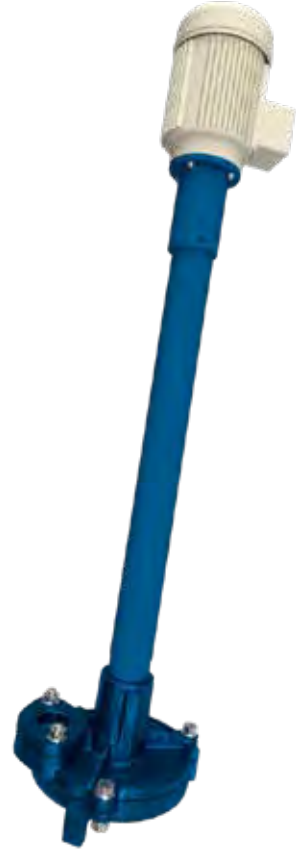
The **Compact Pumps in inline version (EBPI)** are ideal for conveying of liquids in the building technology with their possibility of direct mounting into the pipe work and their back-pull-out-system. The pumps were constructed in accordance with the ErP-guideline and are supplied with impellers from casted stainless steel as standard.



- ⦿ Vibration and temperature resistance
- ⦿ Versatile choice of materials and seals
- ⦿ Connections for pressure and temperature sensors

The detailed catalogue can be found directly at www.strobl-pumpen.de in the domain "Downloads".



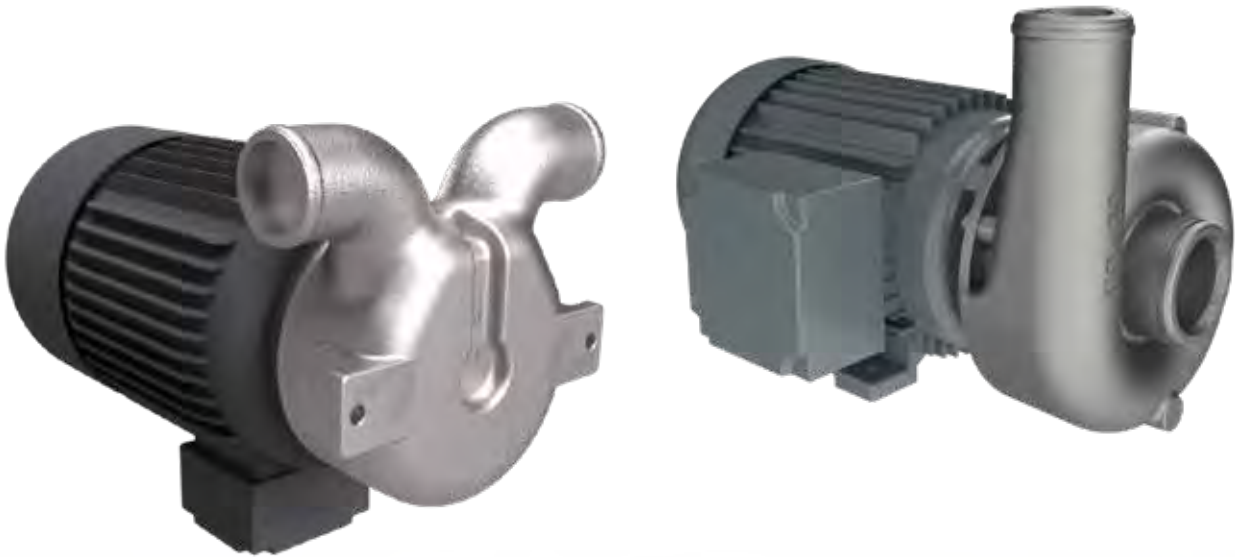


The **Sewage Water Pumps (AWP)** can be used in all sectors of building industry with their different possibilities of set up (dry, flooded or submerged). The conveying of clean and polluted liquids, or hard particles is smoothly possible.

Drainage Pumps (KEP) can as well be inserted in the building industry. The possibility of intermittent operation and the insensitivity of the pump against sand and small stones are the base for their main application, the drainage of sumps.

Further Information can be found in the sector "Water and Wastewater".

CLEANING, WASHING & ENVIRONMENT



Small and cast stainless steel pumps for clean, slightly polluted, or fuzzy liquids are our compact pumps of the series **LD/S and ME**.

- ⦿ Cast stainless steel as standard for casing and impeller
- ⦿ Non-clog through open or free flow impellers
- ⦿ Connections threaded or hose



Sewage Water Pumps (AWP) can be used in this application as well with a cutting plate or cutting device. Further information to this series can be found in the section "Water and Wastewater".

- ◉ Free of fibre collection
- ◉ Simple cleaning through integrated cleaning piece
- ◉ Big free passages



The detailed catalogue can be found directly at www.strobl-pumpen.de in the domain "Downloads".

FOOD & DRUGS

Our **Compact Pumps series ME** can be used in this section. Our high-class pumps machined from bars in stainless steel offer multiple advantages here.

Further information can be found in the section "Cleaning, Washing & Environment".



The detailed catalogue can be found directly at www.strobl-pumpen.de in the domain "Downloads".



Series EBP offers the possibility of pumps in hygienic execution. These pumps are suitable for clean mediums and have a structure that allows residue-free drainage, as well as surfaces with minor surface roughness.

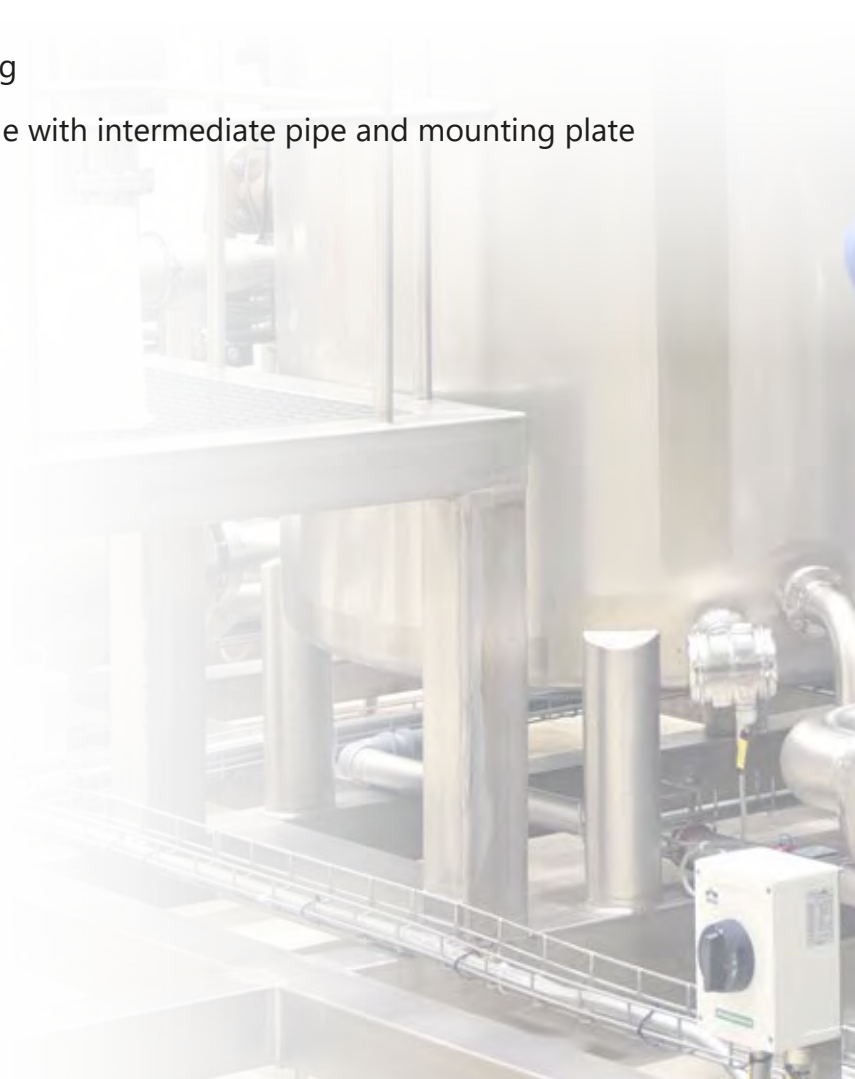
- ⦿ Electropolishing of medium touched surfaces
- ⦿ Open impellers and hygienic clamps
- ⦿ Stainless steel as standard execution
- ⦿ FDA approval



INDUSTRY & PLANT ENGINEERING

All **Chemical Standard Pumps series CNP** correspond the dimensions and performance according to ISO 2858 (similar to ASME B73.1). All sizes can be supplied from a single pump up to complete systems on base plates including motor.

- ⦿ Super high efficiency
- ⦿ Closed multiblade impellers
- ⦿ Durable oil lubricated bearing
- ⦿ Execution CNPVS submersible with intermediate pipe and mounting plate





For vertical drainage of tanks and reservoirs our **Sump Pumps series ETP** are ideal.

- ⦿ Guiding bearings from silicon carbide
- ⦿ Medium lubricated sliding bearings
- ⦿ Multistage executions for high heads
- ⦿ Horizontal pressure nozzles above mounting plate



INDUSTRY & PLANT ENGINEERING

In the section industry & plant engineering our **Sewage Water Pumps series AWP** can as well be used. With the different sizes, corrosion resistant materials and sealing possibilities, for example for high pressure, a lot of applications are possible.

Further information to this series can be found in the section "Water and Wastewater".

- ⦿ High wear resistance
- ⦿ Casing design pressure 40 bar
- ⦿ Sealing with magnet coupling possible



The detailed catalogue can be found directly at www.strobl-pumpen.de in the domain "Downloads".





Through the mostly narrow circumstances in plant engineering, there are possibilities for use of our **Compact Pumps series EBP**.

- ⦿ Compact construction form
- ⦿ Open impellers
- ⦿ Multistage executions for bigger heads
- ⦿ Special versions for up to 200 bar

CHEMICAL & PETROCHEMICAL INDUSTRY

For applications in the chemical and petrochemical industry our **Chemical Standard Pumps series CNP** are ideal. The dimensions and performance of these pumps are in accordance with ISO 2858 (similar to ASME B73.1). Different executions from standard over ISO 5199 up to API 610-OH1 are possible. The versions can be supplied from single pumps with free shaft end to complete systems with base plate, motor, and all necessary accessories.

- ⦿ Versatile material selection even for highly corrosive mediums
- ⦿ Different sealing varieties (direct mounting, cartridge versions or magnetic drive)
- ⦿ Highest efficiency
- ⦿ Low NPSH version by use of inducer





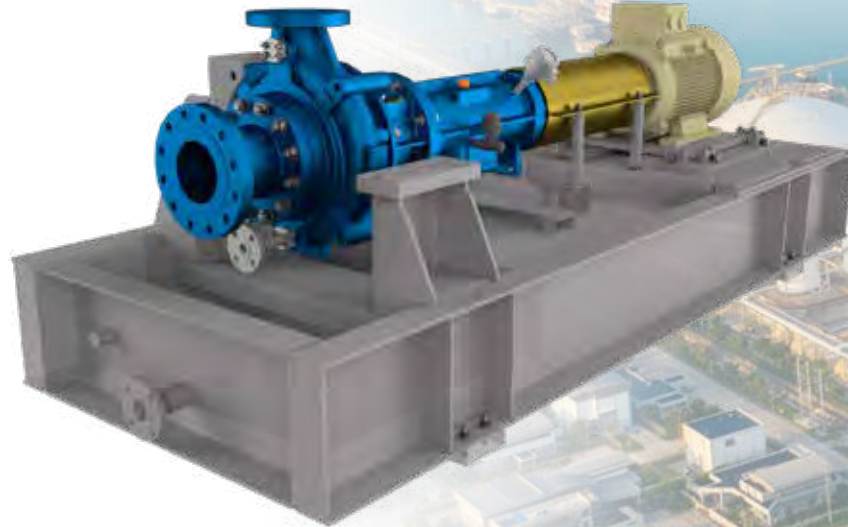
The vertical **Inline Pumps series INP** are characterised by space saving set up possibilities. These pumps are suitable for clean liquids and can be executed completely to API 610-OH3 or OH4.

- ⦿ Nozzle arrangement at same height and rotation in 90° steps
- ⦿ Back-pull-out-system at all executions
- ⦿ Versatile sealing and material combinations
- ⦿ Changeable wear rings on impeller and in casing

CHEMICAL & PETROCHEMICAL INDUSTRY

Pumps series CPP are horizontal **Centreline Process Pumps** with feet at the middle of the axis. An execution to ISO 5199-Family 3 or API 610-OH2 can be supplied. In addition, this series can be produced as sump execution with intermediate pipe and mounting plate (CPPVS).

- ⦿ Possibility of different sealing executions and high corrosion resistant materials
- ⦿ Suction piece with carved optimised flow root faces
- ⦿ System pressures to 40 bar as standard
- ⦿ Changeable wear rings on impeller and in casing



The detailed catalogue can be found directly at www.strobl-pumpen.de in the domain "Downloads".



Multistage Pumps series SKP are usable horizontally or vertically. This series is ideal for high system pressures of up to 250 bar. Multiple executions to API 610-BB4/BB5 are possible.

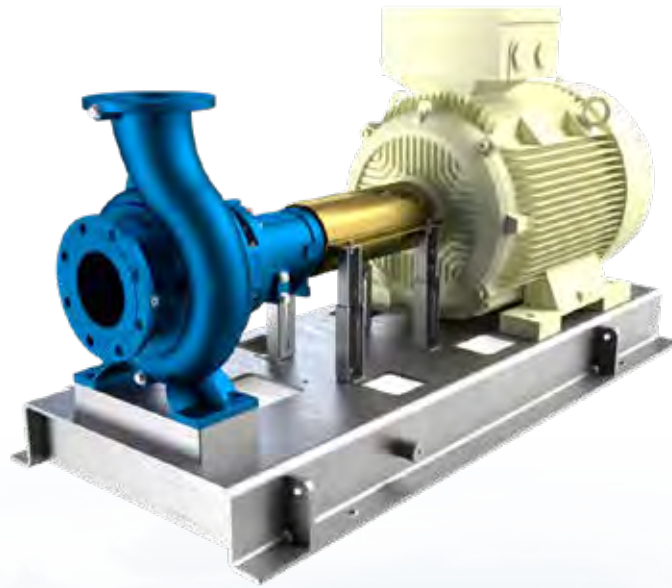
- ⦿ Reduction of axial bearing forces through pressure reverse stage
- ⦿ Inner bearings in silicon carbide
- ⦿ Versatile materials and seal options

OFFSHORE

For vertical mounting, our **Sump Pumps series ETP** suit best. This series is in accordance with the construction form API 610-VS1 or ISO 5199-Family 10/12, therefore these pumps can be executed completely to API 610.

- ⦿ Mounting length flexible
- ⦿ Medium lubricated bearings
- ⦿ Guiding bearings in the intermediate pipes from silicon carbide
- ⦿ Horizontal pressure nozzle above mounting plate
- ⦿ Various materials and seal options



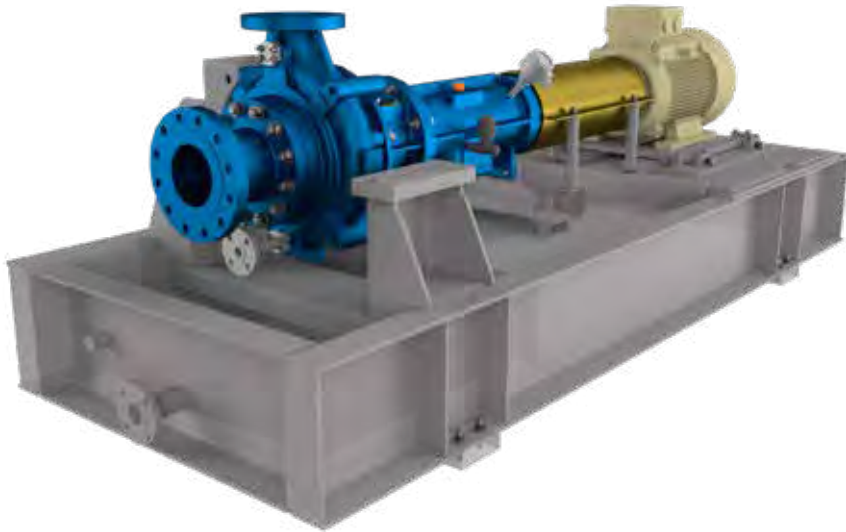


Our **Chemical Standard Pumps series CNP** can as well be used in this application. Executions to API 610-OH1 or ISO 5199 are possible. Further information to this series can be found in "Chemical & Petrochemical Industry".

API 610

API 685

API 682



Centreline Process Pumps series CPP characterise themselves through a horizontal construction. In addition, their feet are at middle of axis, therefore an execution to API 610-OH2 or ISO 5199-Family 3 is possible. The pumps are designed for 40 bar as standard, higher pressures are possible. Our version CPPVS is a sump execution with intermediate pipe and mounting plate.

- ⦿ Versatile material and seal selection even for highly corrosive mediums
- ⦿ Highest efficiency
- ⦿ Option with inducer for low NPSH
- ⦿ Bearing sealing with contact free labyrinths



Inline Pumps series INP can be used multifunctional in this application. The pumps characterise themselves with their space saving set up options and can be produced completely to API 610-OH3 or OH4.

Information to this series can be found in "Chemical & Petrochemical Industry".





The **multistage centrifugal pumps series SKP** are usable horizontally or vertically. These pumps are ideal for high system pressures of up to 250 bar. Multiple executions to API 610-BB4/BB5 are possible.

Details for this series are in section "Chemical & Petrochemical Industry".

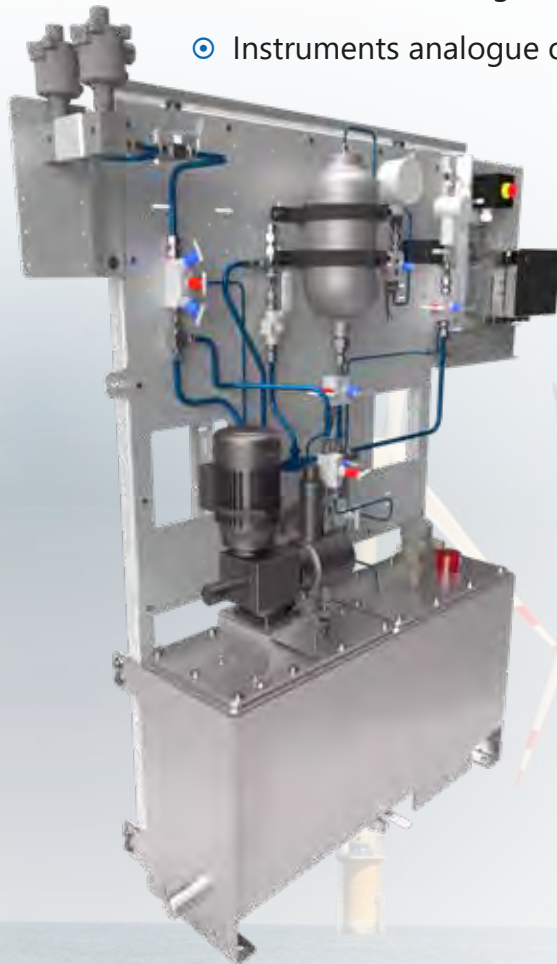


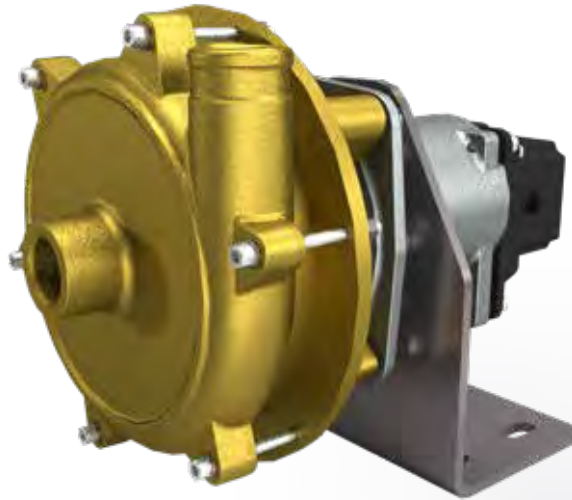
The detailed catalogue can be found directly at www.strobl-pumpen.de in the domain "Downloads".



For many of the presented pump types, a system for supply to the mechanical seal can be necessary. Seal systems to customer request or to API 682 are possible.

- ⦿ Pressures up to 250 bar
- ⦿ Variety in materials up to use of titanium
- ⦿ Air or water cooling
- ⦿ Instruments analogue or digital





Our **Truck Mixer Pumps series FMP** can be supplied in two sizes for direct mounting to or into vehicles and truck mixers.

- ⦿ Connections threaded or hose
- ⦿ Integration into hydraulic system of vehicles
- ⦿ Various drive options



The detailed catalogue can be found directly at www.strobl-pumpen.de in the domain "Downloads".





In the application of ship building our pumps series **EBPI as Compact Pumps in inline version** are often used. The direct mounting into the pipe offers a space saving installation.

- ⦿ Shock and shake proof executions
- ⦿ Back-pull-out function
- ⦿ Materials highly corrosion resistant
- ⦿ Drilled connections for pressure and temperature sensors as standard



INDIVIDUAL SOLUTION REQUIRED?

Together we find the solution for your problem in pumping
Contact us!





62.00°

50.00° .01

.03725

4.00°

A

2.00



STROBL PUMPEN

Headquarters

Strobl Pumpen GmbH & Co.KG
Boschring 3
91161 Hilpoltstein
Germany

+49 9174 97708-0

info@strobl-pumpen.de

www.strobl-pumpen.de



Sales Southern Germany

+49 9174 97708-133

Sales Northern Germany

+49 9174 97708-181

Sales International

+49 9174 97708-135



Sales partners

Delta-p
Lensmannsli 4
1386 Asker
Norway
www.delta-p.no

Speck Pompen Nederland B.V.
Stationspoort 10
6902 KG Zevenaar
Netherlands
www.speck.nl

Speck Pompen Begie NV
Bierweg 24
9880 Aalter
Belgium
www.speckpompen.be

Teraju Petroleum
Unit 17.2 Level 17 Wisma Sunway
40100 Shah Alam, Selangor
Malaysia
www.terajupetroleum.com



Your Contact

+

+

+

+

STROBL PUMPEN GMBH & CO. KG
BOSCHRING 3 - 91161 HILPOLTSTEIN

TEL.: +49-9174-97708-0
FAX.: +49-9174-97708-10

INFO@STROBL-PUMPEN.DE
WWW.STROBL-PUMPEN.DE